



Total EV Charging Solution for Future eMobility

Residential | Workplace | Commercial | Fleet | Gas Station | Highway

AUTEL

Green Energy Powers the Future

About AUTEL

Founded in 2004, Autel develops and sells automotive intelligent diagnostic, inspection and analysis products and solutions. Autel also develops and sells automotive electronic accessories. Our products and solutions cover more than 70 countries and regions, including the United States, Germany, Britain and Australia, etc.

Meanwhile, Autel proactively started the exploration and development of EV Charging solution in 2021, aiming to explore the sustainable development of better people, automotive, technology, and new energy.

In February 2020, Autel successfully listed on the SSE STAR Market (stock code: 688208).

Autel is committed to becoming a global leader providing automotive maintenance solutions that seamlessly integrate device, cloud, big data, and artificial intelligence, while continuously building the digital ecosystem and exploring new opportunities in intelligent driving and new energy.

Autel has gradually built a comprehensive R&D team and quality control system. With its primary focus on the development of automotive diagnostic solutions, Autel has formed a comprehensive system that comprises all company segments, including software, hardware, design and testing. Autel continues to increase strategic investment in R&D. R&D investment accounts for more than 15% of revenue, and R&D employees account for more than 60 percent of Autel's employees. Autel has established R&D centers in Shenzhen headquarters, Silicon Valley, Munich, Xi'an and Changsha. Autel boasts 2 factories, located in Guangming District, Shenzhen and Haiphong, Vietnam. The floor areas of the Guangming and Haiphong branches cover 15,000 and 20,067 square meters, respectively.



Green



Safe



Intelligent

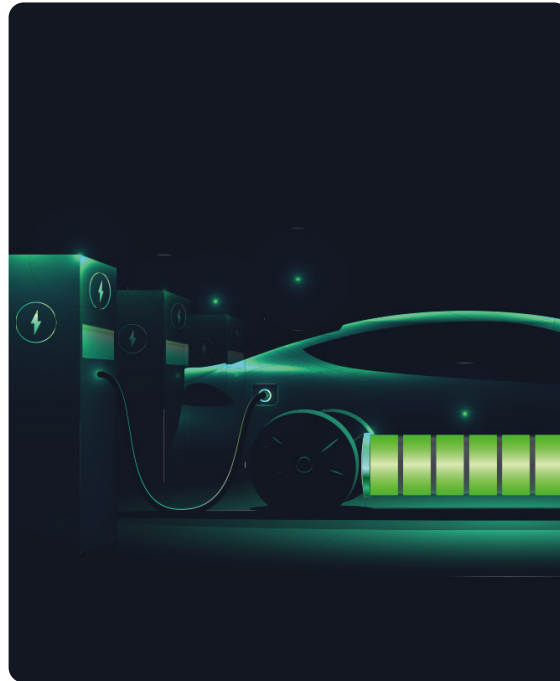


Innovative

Leading technology



Intelligent EV Battery
Diagnostic Technology



Longer EV Battery Life



High Compatibility
of Vehicle-Charger



R&D



Product Development
& Prototyping



Supply Chain &
Production



Software &
Development

From Design Through Support



24/7 Support &
Warranty



Sales, Marketing
& Distribution

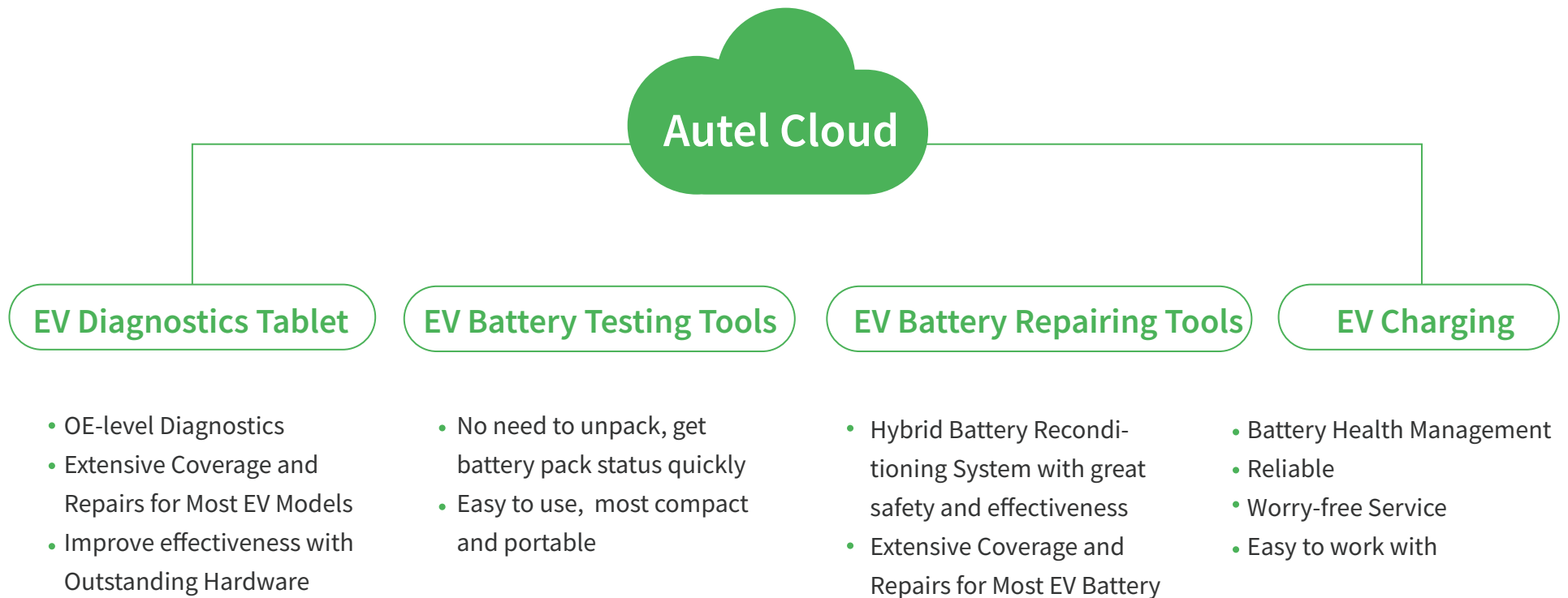


Vehicle Testing
& Interoperability



Quality Assurance

Autel One-stop Solution For EV repairing



Autel One-stop Solution For EV Repairing

Help to upgrade your car workshop to increase income

EV Repairing

Battery Module Balancer
Insulation Resistance Tester
Battery Discharger/Charger
Leak Tester



EV Makers

Cooperation with OEM to
get huge support

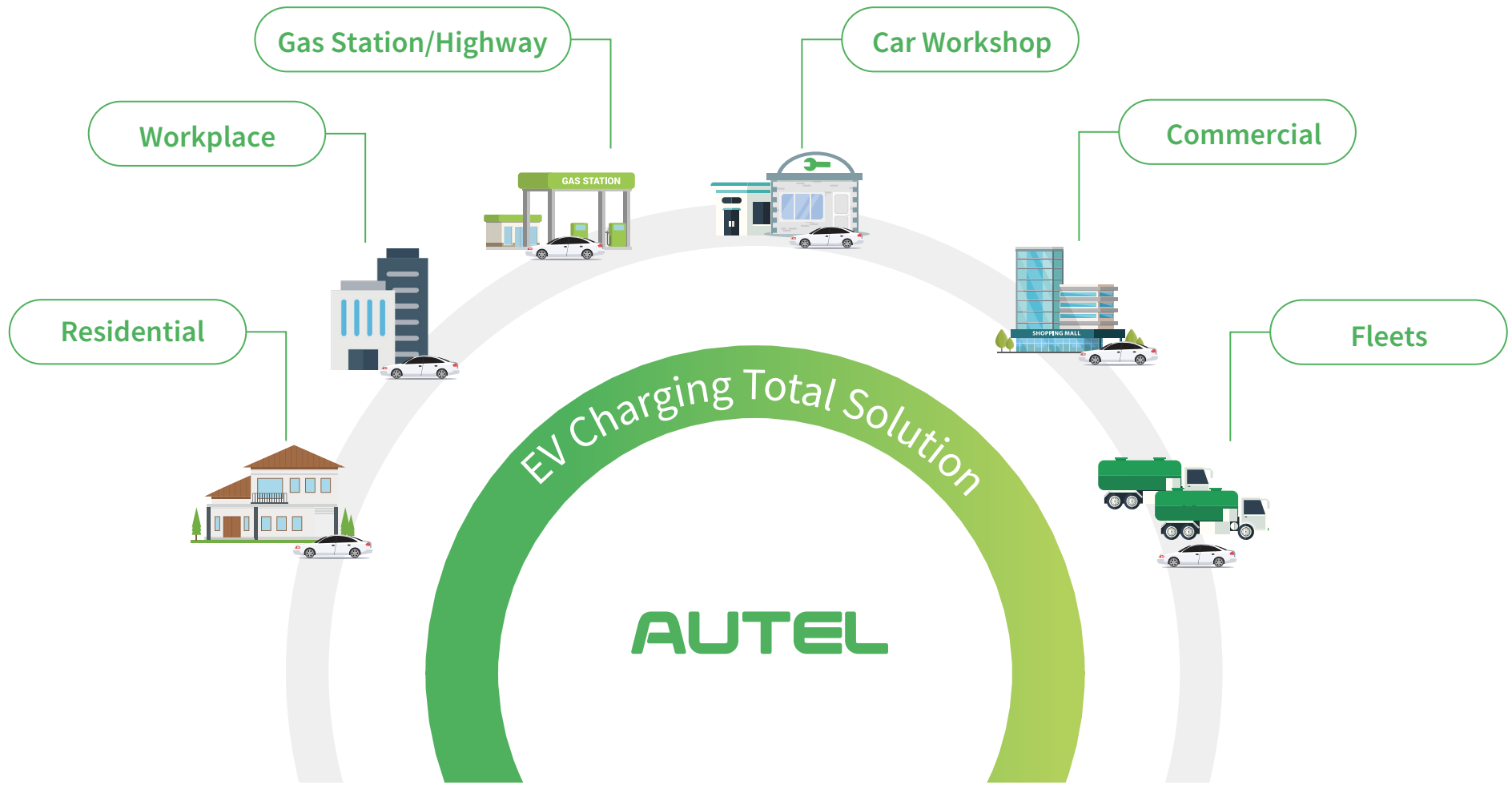
EV Service Station

Maintenance/Repair
Drive more traffic to car
workshop

EV Training

One-on-one training team
Autel EV service team

A total EV charging solution perfectly fits for all your applications



The future of EV charging

Safe, Reliable, Fast, and Smart



Safe

Built-in protections prevent overcurrent and AC/DC leakage and make sure the charging environment is safe for the building and the vehicle



Reliable

IP65 protection from dust, oil, and water. Perfect fit for outdoor applications. Weatherproof, UV-resistant, Color-stable, Low failure rate



Fast

480kW Fast Charging with Dynamic Power Allocation; Liquid cooling cable, max. current 500A per plug; Can charge up to four vehicles in parallel, >95% high efficiency, new design of power module topology, new materials of silicon carbide.



Intelligent

World First Triple Protection Technology, Safe Charging; Intelligent Battery Diagnose Technology, longer battery life.



MaxiCharger AC Wallbox

Residential | Workplace | Commercial
Car Workshop



Highlights



High Safety

World First Triple Protection Technology,
Safe Charging



Long Lasting

Intelligent Battery Diagnose Technology,
longer battery life



High Reliability

IP65 Protection, Fits for Extreme Weather



High Convenient

Easy to Install, Easy to Maintain

Product Features



Intelligent Battery
Diagnose Technology



Built-in Safety



Compatible with every
electric vehicle



Cover major charging
standards



IP65 protection from
water and dust



Weatherproof, perfect fit
for outdoor applications



Connect to MaxiCharge
Mobile App, track, manage,
and optimize EV charger
anywhere and anytime



Remote Firmware Update
and Troubleshooting



Worry-free Service

Technical Specification

Product Information	Charging mode Mode 3 charging	Input/output power rating and current Single phase up to 7.4kW/32A Three phase up to 22kW/32A	Protection Overcurrent, overvoltage, undervoltage, ground fault including DC residual current protection, integrated surge protection
	Input/output voltage 230V±15%, single phase ; 400V±15%, three phase 50Hz	Network type TT,TN	
General characteristics	IP and IK rating IP65; IK08	Operating altitude 2000m	Operating temperature range -40°C~+55°C
	Storage temperature range -40°C~+85°C	Mounting Wall or floor using a pedestal	Dimensions (HxWxD) 336x187x85mm
User interface	Status indication LED/APP/Touch Scéen(optional)	User Interface MaxiCharge APP; MaxiCharge Service Software	Connectivity 4G, Bluetooth, Wi-Fi, Ethernet
	Communication protocols OCPP 1.6J	User authentication APP, RFID card, QR code	
Software update	Software update OCPP 1.6J, APP or web portal		
Certification	Safety standards IEC/EN 61851-1, EN 62311, EN 62479, IEC/EN 62955	Certification CE, TUV	Warranty 36 months



MaxiCharger DC Wallbox

Residential | Workplace
Commercial | Car Workshop



Highlights



High Safety

World First Triple Protection Technology,
Safe Charging



Long Lasting

Intelligent Battery Diagnose Technology,
longer battery life



High Compatibility

Compatible with 99.5% Electric Vehicles



Low Noise

55dB Low Noise, Environment Friendly

Product Features



Intelligent Battery
Diagnose Technology



Compatible with 99.5%
Electric Vehicles



55dB Low Noise



Built-in Safety



High Performance Charging
Module



IP65 protection
Weatherproof, perfect fit
for outdoor applications



Connect to MaxiCharge
Mobile App, track, manage,
and optimize EV charger
anywhere and anytime



Easy to install, Easy to
maintain



Remote Firmware Update
and Troubleshooting

Technical Specification

DC output connection	Charging mode Mode 4: CCS2	Output voltage 200–1000V	Number of outputs single output CCS2
	Output power 20kW	Output current 0–66.7A DC	Average efficiency at full power ≥95%
AC input connection	Earthing system 3P, N, PE	Input voltage 3-phase 400V AC ±15%	Input frequency 50Hz
	Power factor ≥0.99	Harmonic distortion (THDi) <5%	
General characteristics	IP rating IP65; IK10	Operating altitude 2000m	Operating temperature range –40°C~+55°C
	Storage temperature range –40°C~+70°C	Mounting Wall or floor using a pedestal	Dimensions (H×W×D) 717×458×192mm
User Interface	Screen type 8 inch LCD display	Status indication LED/LCD/APP	User Interface MaxiCharge APP; MaxiCharge Service Software
	Connectivity 4G, Bluetooth, Wi-Fi, Ethernet	Communication protocols OCPP 1.6J	User authentication APP, RFID card, QR code
Software update	Software update OCPP 1.6J, web portal		
Certification and standards	Safety standards EN 61851–1; EN 61851–23; ISO 15118	Certification CE, TUV, EMC Class B	Warranty 12 months, warranty extension possible



MaxiCharger DC Fast

Fleet | Highway | Gas Station
Commercial Parking



Highlights



High Safety

World First Triple Protection Technology,
Safe Charging



Long Lasting

Intelligent Battery Diagnose Technology,
longer battery life



High Compatibility

Compatible with 99.5% Electric Vehicles



Super Fast

240kW Fast Charging with Dynamic Power
Allocation

Product Features



Intelligent Battery
Diagnose Technology



Compatible with 99.5%
Electric Vehicles



Dynamic Load Balancing



Built-in Safety



High Performance Charging
Module



Weatherproof, perfect fit
for outdoor applications



Connect to MaxiCharge
Mobile App, track, manage,
and optimize EV charger
anywhere and anytime



Easy to install, Easy to
maintain



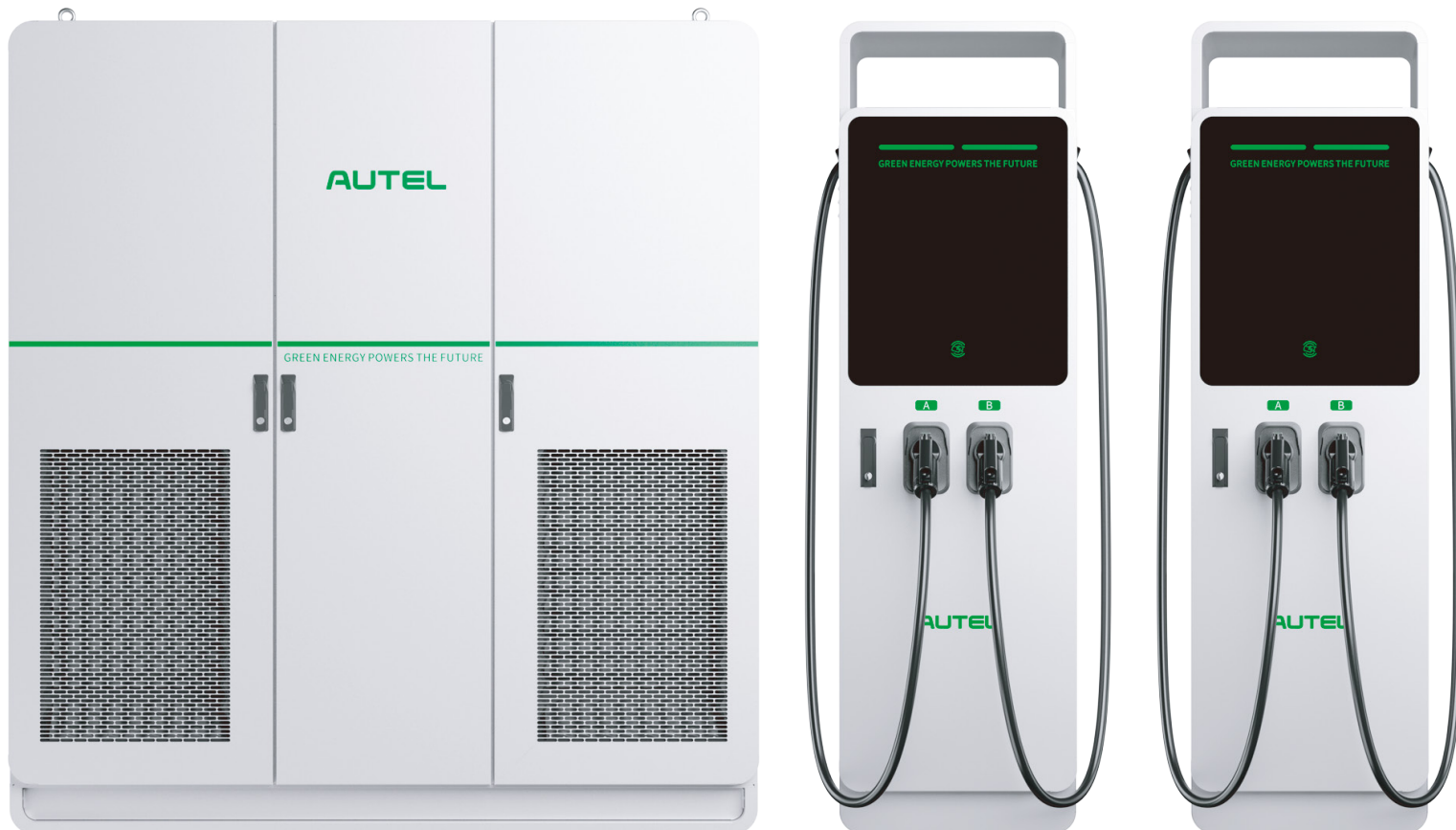
Remote Firmware Update
and Trouble- shooting

Technical Specification

DC output connection	Charging mode Mode 4: CCS2	Output voltage 150–1000V	Number of outputs 2* CCS2 or 2*CHAdeMO
	Output power 60kW/120kW/180kW/240kW	Output current CCS Nature Cooling plug : 200A CHAdeMO: 200A	Average efficiency at full power ≥95%
AC input connection	Earthing system 3P, N, PE	Input voltage 3-phase 400V AC ±15%	Input frequency 50Hz
	Power factor ≥0.99	Harmonic distortion (THDi) <5%	
General characteristics	IP rating IP54; IK10	Operating altitude 2000m	Operating temperature range –30°C~+50°C
	Storage temperature range –40°C~+80°C	Mounting Floor Standing	Dimensions (H×W×D) 1900×900×890mm
User Interface	Screen type 15.6 inch LCD display	Status indication LED/LCD/APP	User Interface MaxiCharge APP MaxiCharge Service Software
	Connectivity 4G, Bluetooth, Wi-Fi, Ethernet	Communication protocols OCPP 1.6J	User authentication APP, RFID card, QR code, Credit Card
Software update	Software update OCPP 1.6J, web portal		
Certification and standards	Safety standards EN 61851–1; EN 61851–23 EN 61851–21–2; ISO 15118	Certification CE, EMC Class A	Warranty 12 months, warranty extension possible

MaxiCharger DC High Power

Fleet | Highway | Gas Station





Highlights



High Safety

World First Triple Protection Technology,
Safe Charging



Long Lasting

Intelligent Battery Diagnose Technology,
longer battery life



High Compatibility

Compatible with 99.5% Electric Vehicles



Super Fast

480kW Fast Charging with Dynamic Power
Allocation

Product Features



Intelligent Battery
Diagnose Technology



480kW Super Fast Charging
Liquid Cooling Cable



Compatible with 99.5%
electric vehicles



Built-in Safety



High Performance Charging
Module



Weatherproof, perfect fit
for outdoor applications



Connect to MaxiCharge
Mobile App, track, manage,
and optimize EV charger
anywhere and anytime



Dynamic Power Allocation



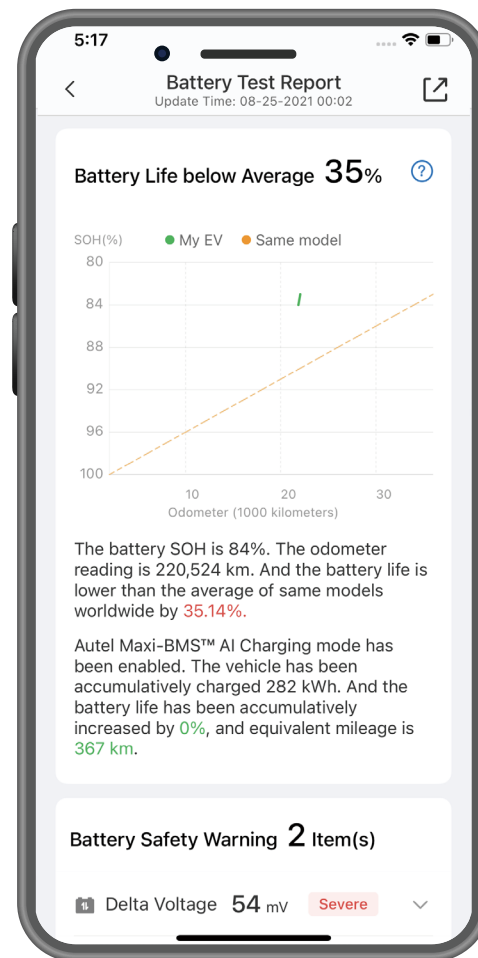
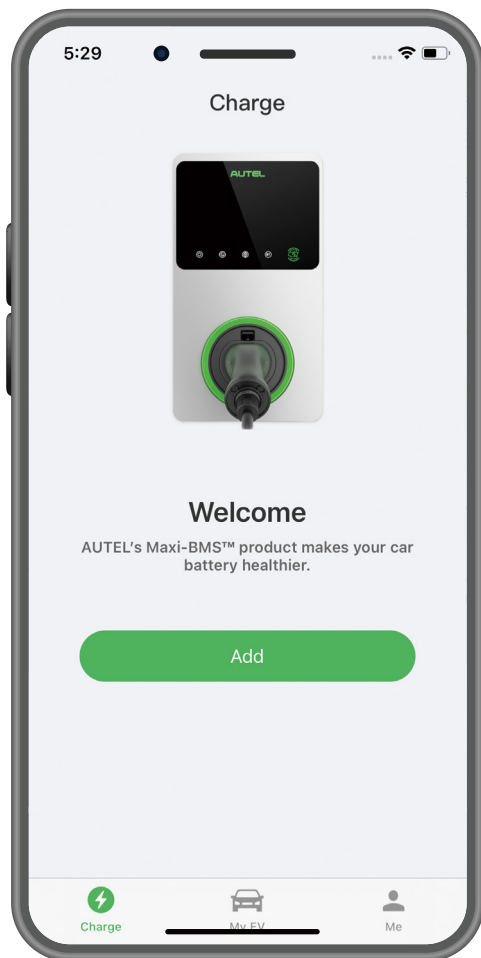
Remote Firmware Update
and Troubleshooting

Technical Specification

DC output connection	Charging mode Mode 4: CCS2	Output voltage 150–1000V	Number of outputs 4* CCS2 or 2*CCS2+2*ChadeMo
	Output power 360kW/480kW	Output current CCS Liquid cooling plug: 500A CCS Nature cooling plug: 200A CHAdeMO: 200A	Average efficiency at full power ≥95%
AC input connection	Earthing system 3P, N, PE	Input voltage 3-phase 400V AC ±15%	Input frequency 50Hz
	Power factor ≥0.99	Harmonic distortion (THDi) <5%	
General characteristics	IP rating IP54; IK10	Operating altitude 2000m	Operating temperature range –30°C~+50°C
	Storage temperature range –40°C~+80°C	Mounting Floor Standing	Dimensions (H×W×D) 1900×1750×1000mm(Main Cabinet) 1850*540*600mm (charger)
User Interface	Screen type 15.6 inch LCD display	Status indication LED/LCD/APP	User Interface MaxiCharge APP; MaxiCharge Service Software
	Connectivity 4G, Bluetooth, Wi-Fi, Ethernet	Communication protocols OCPP 1.6J	User authentication APP, RFID card, QR code, Credit Card
Software update	Software update OCPP 1.6J, web portal		
Certification and standards	Safety standards EN 61851–1; EN 61851–23 EN 61851–21–2; ISO 15118	Certification CE, EMC Class A	Warranty 12 months, warranty extension possible

MaxiCharge Mobile App

Use our charging APP to track, manage,
and optimize EV charging at your location.

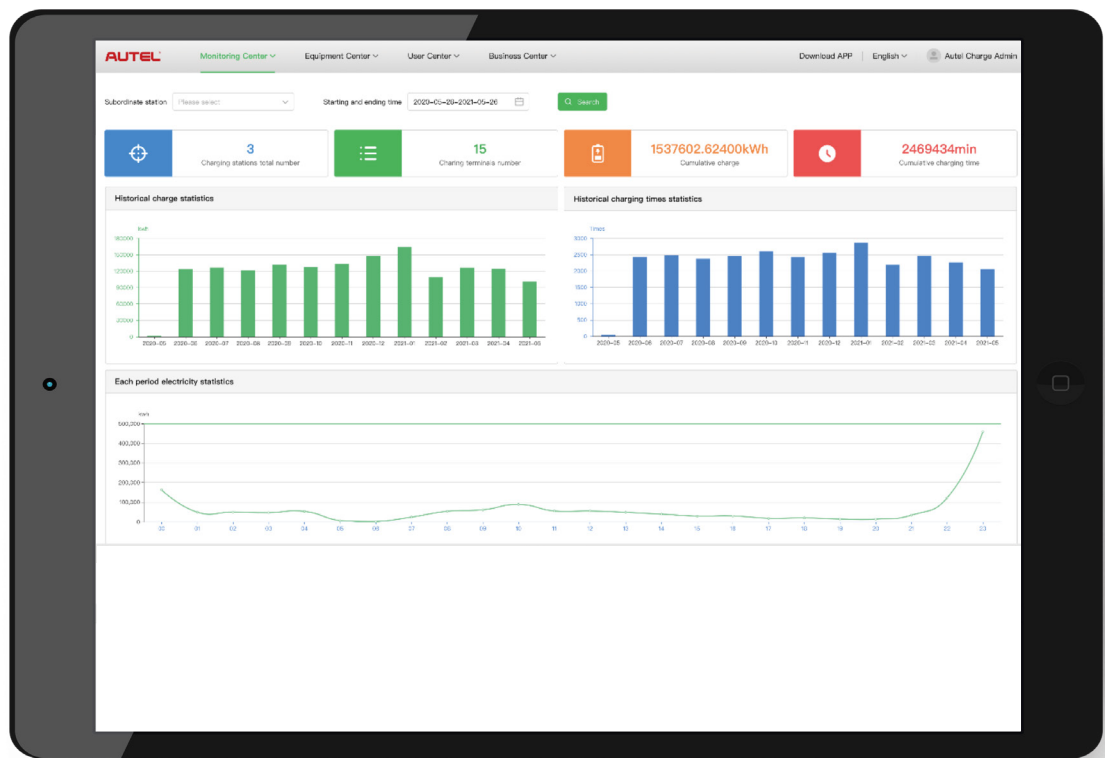




- Control your smart home charging unit via the MaxiCharge app
- Optimize your EV charge routine to complement your lifestyle & energy tariff
- Start, stop, schedule charging remotely
- Receive notifications when your car is done charging
- Track your EV battery health while charging

MaxiCharge Charging Management Software

Use our charging management software to track, manage, and optimize EV charging at your location.





Station Management

Remotely control your stations, see their status, adjust technical configurations, push updates and more.



Driver Management

MaxiCharge allows you to fully manage your drivers and your charge cards.

Advantage



Smart Charging

Create charging schedules and manage your stations energy consumption. Whether it is to limit grid capacity or fluctuating energy prices, you have full control.



e-Roaming

Manage roaming partners via Open Charge Point Interface (OCPI) connections including connections to charging networks and eMobility service providers (eMSP).

Worry-free Service

Consulting | Installation | Training
Technical Support | Warranty



Professional On-Site
Consulting Service



Installation Service



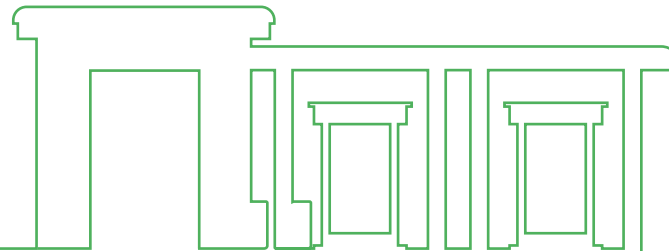
Technical Training



Warranty Service

Published by AUTEL EUROPE GmbH

Subject to changes and errors. The information given in this document only contains general descriptions and/or performance features which may not always specifically reflect those described, or which may undergo modification in the course of further development of the products. The requested performance features are binding only when they are expressly agreed upon in the concluded contract. All product designations may be trademarks or other rights of AUTEL EUROPE GmbH, its affiliated companies or other companies whose use by third parties for their own purposes could violate the rights of the respective owner.



Add: Adalperostraße 82, 85737 Ismaning – Germany

For more information, please contact our Customer Support Center

Phone: +49(0)89 540299608

E-mail: salesoffice.eu@autel.com support.eu@autel.com

Website: evcharging.autel.com